



Information

Below is the Regional Government network involved in the transfer of innovations in the field of lifelong learning and participating in the SMOC:

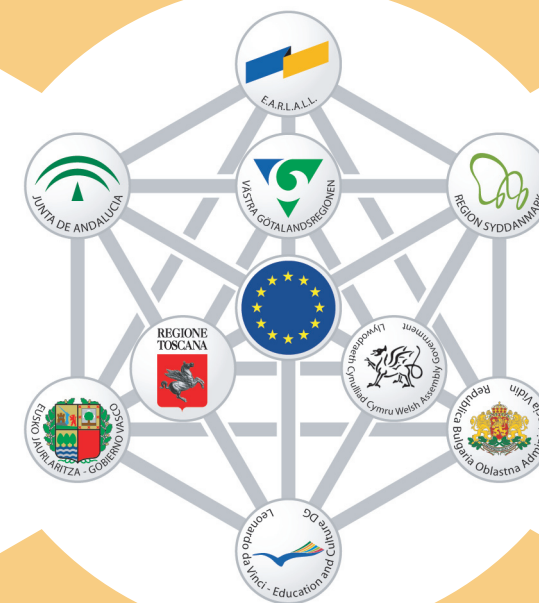
- Baden-Württemberg
- Région Bretagne
- Gobierno Vasco
- Jämtland County Council
- Junta de Andalucía
- Landeschulrat für Steiermark
- Region Syddanmark
- Regione Toscana
- Rheinland-Pfalz
- The Welsh Assembly Government
- Västra Götalandsregionen
- Vidin District

For more information:

Earlall - <http://www.earlall.eu>

The initial project, PREVALET, was established in the framework of the Leonardo Da Vinci Programme - Reference Material

Visit the website
www.mutual-learning.eu



SMOC

The Soft Open Method of Coordination
between the Regions

A service from Earlall
for the Regional Governments

The Reasons

Earlall, The European Association of Regional and Local Authorities for Lifelong Learning, has developed a device that streamlines cooperation between the Regional Governments aimed at policy learning and policy transfer in the field of lifelong learning.

The service has been built with the support of the European Commission Leonardo da Vinci Programme (project PREVALET) and developed through an applied research initiative, which has directly involved the Regional Government of Andalusia, the Welsh Assembly Government, the Basque Country, Southern Denmark, Regione Toscana, Västra Götaland and Vidin District.

At the prototype development stage, between 2005 and 2006, Earlall benefited from a collaboration initiative with the Universities of Florence and Örebro, as well as the DIE - Deutsches Institut für Erwachsenenbildung. Theoretical and methodological studies are available at www.mutual-learning.eu.

The service

SMOC - Soft Open Method of Coordination provides the Regional Governments with:

- 1 a networking support whereby they can express their benchmarking interests in the matter of lifelong learning and identify institutional partners who are interested and available
- 2 a database of policy measures via which they can collect detailed information on the individual provisions adopted by the various Regional Governments which are involved in the SMOC
- 3 a dedicated search engine facilitating searches within the websites of the Regions themselves
- 4 a support service for building contacts with the political and institutional heads involved in Lifelong Learning policies from other Regions with a view to organising study visits
- 5 a consultancy service to lay down bilateral or multilateral agreements in support of policy transfer actions

Initial results

The SMOC service has already demonstrated its effectiveness through its support for policy learning and policy transfer processes. Examples of initial experiences are:

- the joint construction of cooperation models between the Regions supporting mobility for students and young graduates (trainees)
- the establishment of bilateral agreements for the development of shared and coordinated investment plans in the area of e-learning
- the transfer of innovative services for active ageing (*Project Senior at work*)
- the harmonisation of measures aimed at trans-regional cooperation in the framework of the Regional Operational Programmes of the European Social Fund